

FOR LEASE

Ferndale Light Industrial Facility

Office Space & Warehouse

D100 - 6920 Salashan Parkway, Ferndale, WA 98248



AVAILABLE SPACE:
RATE:

3,400 Sq Ft
\$0.50/SF/Month NNN

PROPERTY FEATURES:

- 1,240 Sq Ft Office Space; 2,160 Sq Ft Warehouse
- Three offices
- Computer/copier center
- Reception area and board Room
- Washroom and coffee area/sink
- Grade-level overhead door into warehouse
- Warehouse has full sprinkler system
- Fluorescent lighting
- 480 volt three-phase electrical service
- Ample customer parking
- CBA# 484291

MIKE MULDER

(360) 366-3357

mulder4955@hotmail.com

MIKE KINGSLEY

(360) 223-3944

kingsley@windermere.com

JEFF JOHNSON

(360) 319-8358

jajohnson@windermere.com

www.copacrealestate.com

www.wrecommercial.com



COPAC
REAL ESTATE LLC



515 West Bakerview Rd.—Bellingham, WA—360-676-5900—www.wrecommercial.com

Information contained herein has been obtained from the owner of the property or from other sources that we deem reliable. We have no reason to doubt its accuracy, but we do not guarantee it.

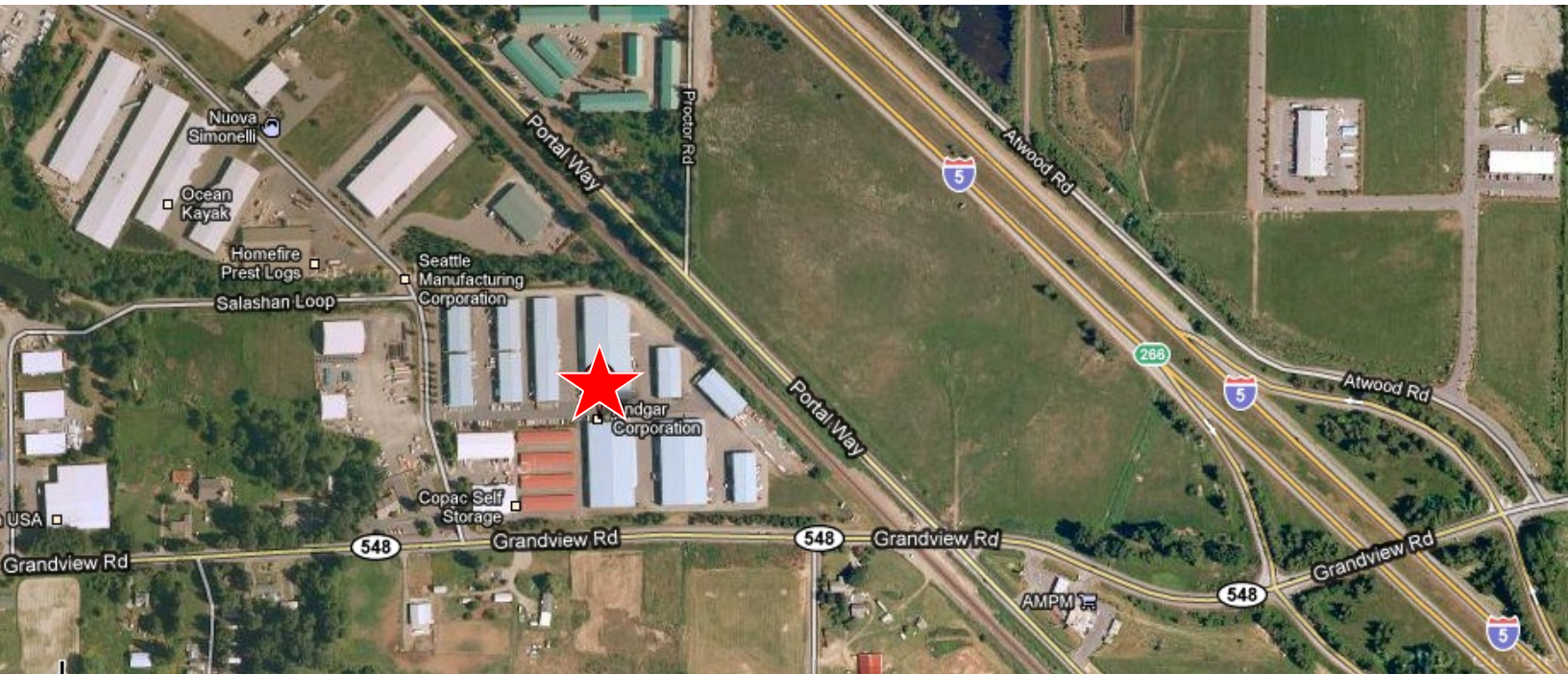
FOR LEASE

Ferndale Light Industrial Facility

Office Space & Warehouse

D100 - 6920 Salashan Parkway, Ferndale, WA 98248

Aerial Photo



Driving Directions:

From I-5 take the Grandview Exit #266. Go West Approximately 1/2 mile (Cross the railroad tracks and Portal Way) Turn Right on Salashan Parkway. Take second right in front of Andgar and proceed down lane.



COPAC
REAL ESTATE LLC



515 West Bakerview Rd.—Bellingham, WA—360-676-5900—www.wrecommercial.com

Information contained herein has been obtained from the owner of the property or from other sources that we deem reliable. We have no reason to doubt its accuracy, but we do not guarantee it.