

FOR LEASE

Ferndale Light Industrial Facility

Warehouse + Secured Storage

F100—6920 Salashan Parkway, Ferndale, WA 98248



MIKE MULDER

(360) 366-3357

mulder4955@hotmail.com

MIKE KINGSLEY

(360) 223-3944

kingsley@windermere.com

JEFF JOHNSON

(360) 319-8358

jajohnson@windermere.com

www.copacrealestate.com

www.wrecommercial.com

AVAILABLE SPACE: 10,000 Sq Ft
RATE: \$0.35/SF/Month NNN

PROPERTY FEATURES:

- 20' eave height
- Three, overhead grade-level doors
- Three man doors
- Pre-engineered steel building construction
- Gas fired forced air heating
- 200 amp, 480 volt, 3 phase electrical system
- Fluorescent lighting
- Ample customer parking & truck maneuvering area
- Adjoining secured outdoor storage
- CBA# 484549



COPAC
REAL ESTATE LLC



515 West Bakerview Rd.—Bellingham, WA—360-676-5900—www.wrecommercial.com

Information contained herein has been obtained from the owner of the property or from other sources that we deem reliable. We have no reason to doubt its accuracy, but we do not guarantee it.

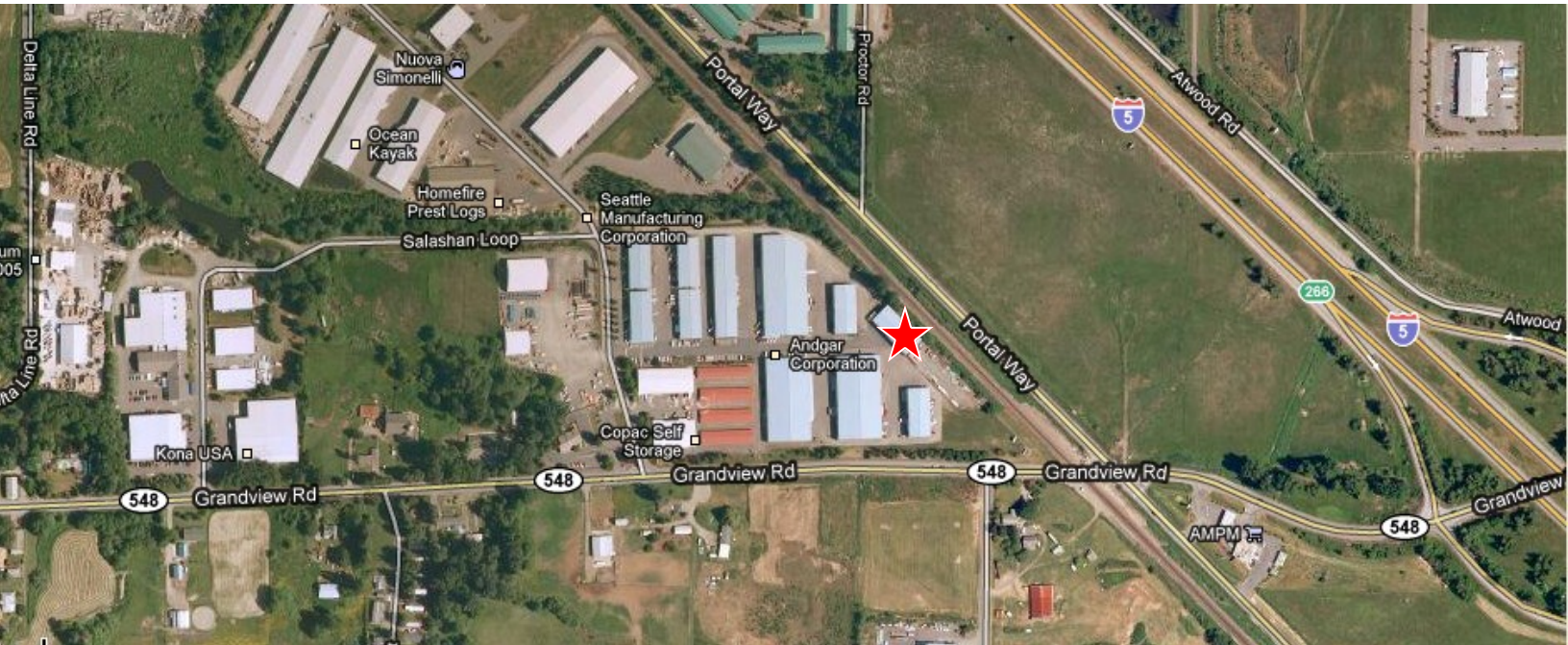
FOR LEASE

Ferndale Light Industrial Facility

Warehouse + Secured Storage

F100—6920 Salashan Parkway, Ferndale, WA 98248

Aerial Photo



Driving Directions:

From I-5 take the Grandview Exit #266

Go West Approximately 1/2 mile (Cross the railroad tracks and Portal Way) Turn Right on Salashan Parkway. Take second right in front of Andgar and proceed down lane.



COPAC
REAL ESTATE LLC



515 West Bakerview Rd.—Bellingham, WA—360-676-5900—www.wrecommercial.com

Information contained herein has been obtained from the owner of the property or from other sources that we deem reliable. We have no reason to doubt its accuracy, but we do not guarantee it.