

FOR SALE

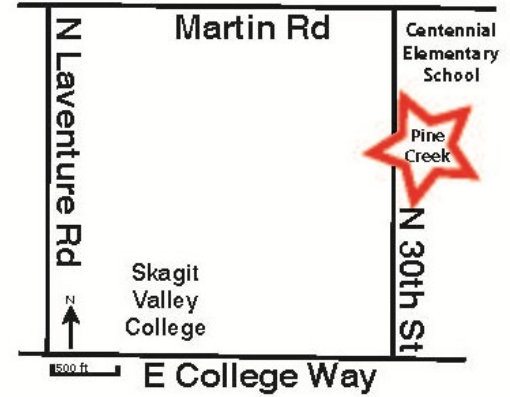
5 BED / 2.75 BATH NEW CONSTRUCTION

PINE CREEK ESTATES

\$319,950

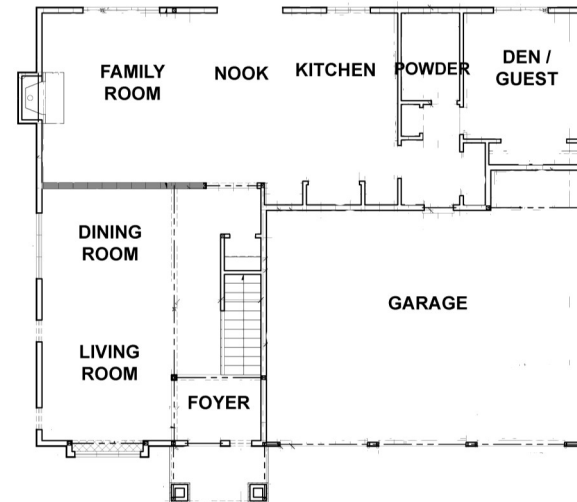
Lot 27 3056 Pine Creek Drive, Mount Vernon, WA 98273

MLS #415615



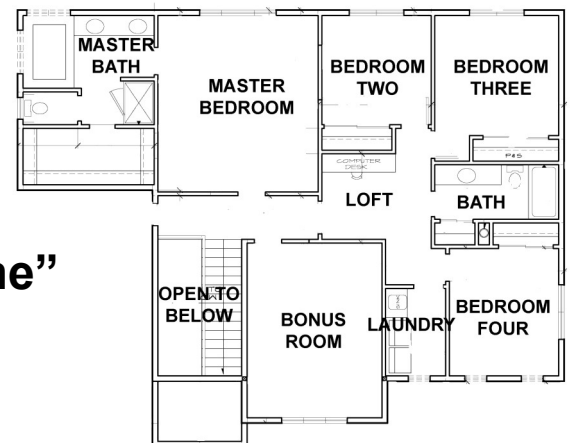
Location Features:

- Adjacent to elementary school and ball diamond
- Near park facility with walking/jogging trails
- Close to Skagit Valley College
- 5 minute drive to major shopping area
- Bedroom community to Everett, Seattle, Anacortes
- 25 minutes from Everett Boeing plant where 747s, 767s, 777s built
- Skagit County is less than 60 minutes from Boeing Renton where 737 Max will be built
- 45 minute drive to Canadian border
- Newly developed area with park-like landscaping, curbs and deluxe street lights
- Owner is also licensed real estate broker in Washington State



Home Features:

- NW contemporary design
- Prominent builder North Coast Homes
- 5 bedrooms and 2.75 bathrooms
- 2 floor living with 4 bedrooms upstairs
- Guest bedroom with 3/4 bath downstairs
- 2774 finished square feet
- 3 car garage



“The Brookstone”



Mike Mulder

(360) 366-3357

mike@copacrealestate.com

www.copacrealestate.com



COPAC
REAL ESTATE LLC

Suite A1 – 6910 Salashan Parkway, Ferndale WA 98248

Information contained in this brochure has been supplied by property owner. While accuracy is not doubted, neither is it guaranteed.